

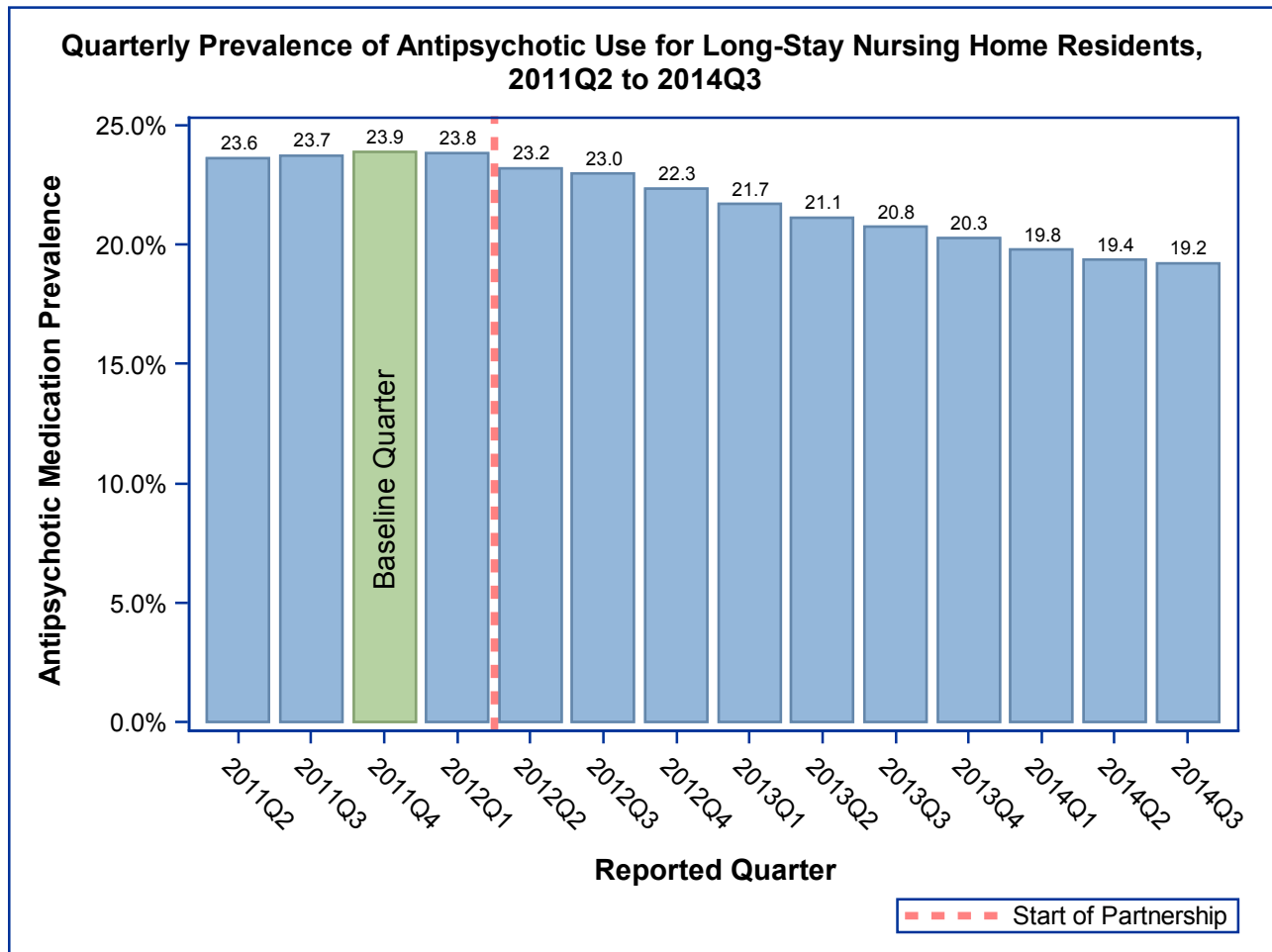
Partnership to Improve Dementia Care in Nursing Homes Antipsychotic Drug use in Nursing Homes Trend Update

The National Partnership to Improve Dementia Care in Nursing Homes is committed to improving the quality of care for individuals with dementia living in nursing homes. The Partnership has a mission to deliver health care that is person-centered, comprehensive and interdisciplinary with a specific focus on protecting residents from being prescribed antipsychotic medications unless there is a valid, clinical indication and a systematic process to evaluate each individual's need. The Centers for Medicare & Medicaid Services (CMS) promotes a multidimensional approach that includes; research, partnerships and state-based coalitions, revised surveyor guidance, training for providers and surveyors and public reporting.

CMS is tracking the progress of the Partnership by reviewing publicly reported measures. The official measure of the Partnership is the percentage of long-stay nursing home residents who are receiving an antipsychotic medication, excluding those residents diagnosed with schizophrenia, Huntington's Disease or Tourette's Syndrome. In 2011Q4 23.9% of long-stay nursing home residents were receiving an antipsychotic medication; since then there has been a decrease of 19.4% to a national prevalence of 19.2% in 2014Q3. Success has varied by state and CMS region, with some states and regions having seen a reduction of greater than 20%.

A three-quarter measure is posted to the Nursing Home Compare website at www.medicare.gov/nursinghomecompare. The long-stay measure on Nursing Home Compare, is the exact same measure as below, except each facility's score is averaged over the last three quarters in order to give consumers information on the past history of each facility.

For more information on this National Partnership, please send correspondence to dnh_behavioralhealth@cms.hhs.gov.

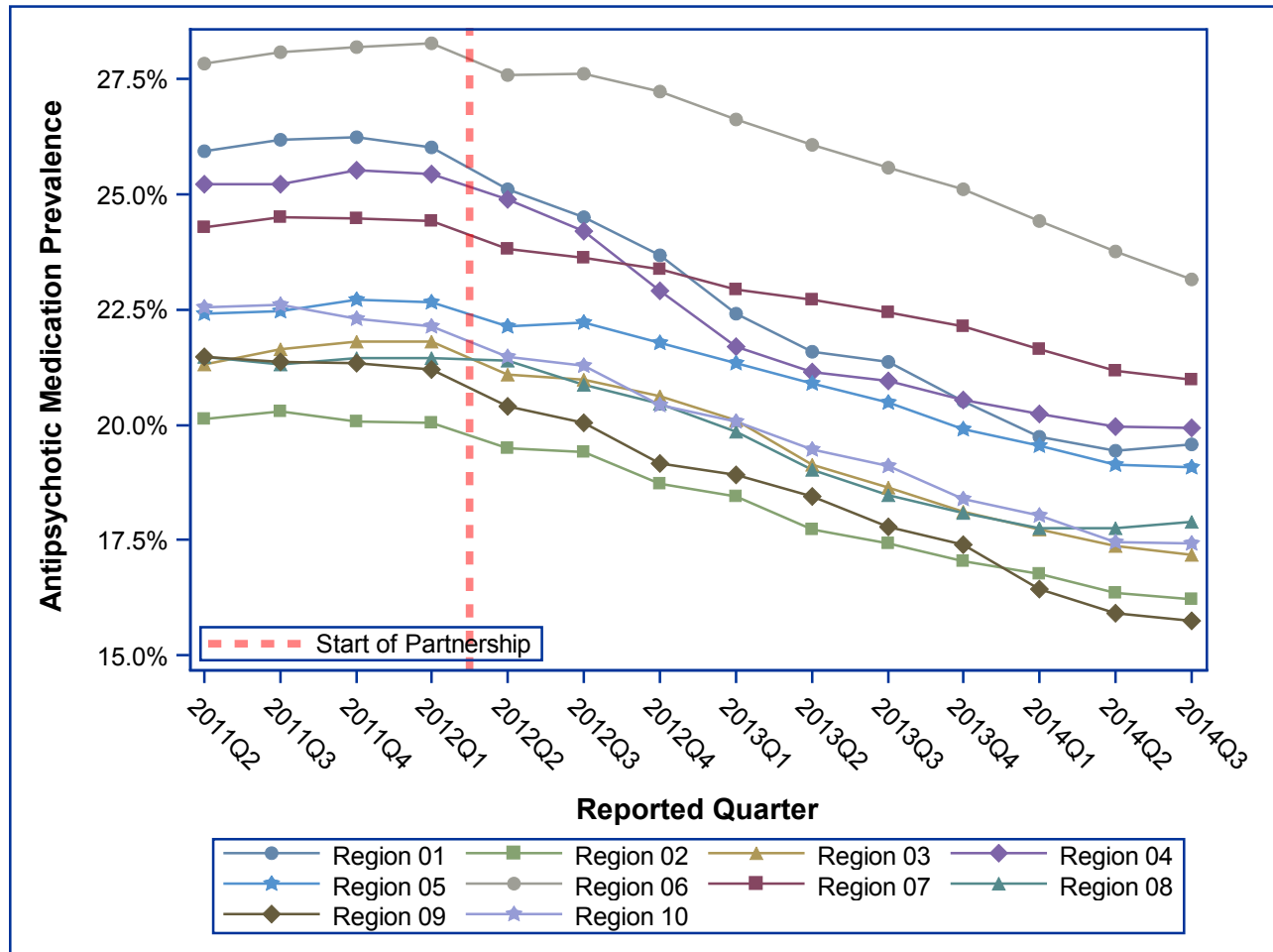


Partnership to Improve Dementia Care in Nursing Homes

Antipsychotic Drug use in Nursing Homes Trend Update

Quarterly Prevalence of Antipsychotic Use for Long-Stay Residents, CMS Regions 2011Q2 to 2014Q3

CMS Region- and State-specific data are displayed below. These data show the change in the single-quarter prevalence of antipsychotic medication use amongst long-stay residents since 2011Q2 and shows the change since the start of the Partnership



| Region | 2011Q4 | 2012Q1 | 2012Q2 | 2012Q3 | 2012Q4 | 2013Q1 | 2013Q2 | 2013Q3 | 2013Q4 | 2014Q1 | 2014Q2 | 2014Q3 | Percentage point difference (2011Q4-2014Q3) | % Change |
|-----------|--------|--------|--------|--------|--------|--------|--------|--------|--------|--------|--------|--------|---|----------|
| National | 23.9% | 23.8% | 23.2% | 23.0% | 22.3% | 21.7% | 21.1% | 20.8% | 20.3% | 19.8% | 19.4% | 19.2% | -4.64 | -19.4% |
| Region 01 | 26.2% | 26.0% | 25.1% | 24.5% | 23.7% | 22.4% | 21.6% | 21.4% | 20.5% | 19.7% | 19.4% | 19.6% | -6.65 | -25.3% |
| Region 02 | 20.1% | 20.0% | 19.5% | 19.4% | 18.7% | 18.4% | 17.7% | 17.4% | 17.1% | 16.8% | 16.3% | 16.2% | -3.84 | -19.2% |
| Region 03 | 21.8% | 21.8% | 21.1% | 21.0% | 20.6% | 20.1% | 19.1% | 18.6% | 18.1% | 17.7% | 17.4% | 17.2% | -4.62 | -21.2% |
| Region 04 | 25.5% | 25.4% | 24.9% | 24.2% | 22.9% | 21.7% | 21.1% | 20.9% | 20.5% | 20.2% | 20.0% | 19.9% | -5.57 | -21.8% |
| Region 05 | 22.7% | 22.7% | 22.1% | 22.2% | 21.8% | 21.3% | 20.9% | 20.5% | 19.9% | 19.6% | 19.1% | 19.1% | -3.63 | -16.0% |
| Region 06 | 28.2% | 28.3% | 27.6% | 27.6% | 27.2% | 26.6% | 26.1% | 25.6% | 25.1% | 24.4% | 23.8% | 23.2% | -5.03 | -17.9% |
| Region 07 | 24.5% | 24.4% | 23.8% | 23.6% | 23.4% | 22.9% | 22.7% | 22.4% | 22.1% | 21.6% | 21.2% | 21.0% | -3.49 | -14.3% |
| Region 08 | 21.4% | 21.5% | 21.4% | 20.9% | 20.4% | 19.8% | 19.0% | 18.5% | 18.1% | 17.8% | 17.8% | 17.9% | -3.54 | -16.5% |
| Region 09 | 21.3% | 21.2% | 20.4% | 20.1% | 19.2% | 18.9% | 18.4% | 17.8% | 17.4% | 16.4% | 15.9% | 15.7% | -5.60 | -26.2% |
| Region 10 | 22.3% | 22.1% | 21.5% | 21.3% | 20.4% | 20.1% | 19.5% | 19.1% | 18.4% | 18.0% | 17.5% | 17.4% | -4.87 | -21.8% |

Partnership to Improve Dementia Care in Nursing Homes
Antipsychotic Drug use in Nursing Homes Trend Update
Quarterly Prevalence of Antipsychotic Use for Long-Stay Residents, States 2011Q2 to 2014Q3

| State | 2011Q2 | 2011Q3 | 2011Q4 | 2012Q1 | 2012Q2 | 2012Q3 | 2012Q4 | 2013Q1 | 2013Q2 | 2013Q3 | 2013Q4 | 2014Q1 | 2014Q2 | 2014Q3 | Rank in 2014Q3 (lower=better) | Percentage point difference (2011Q4-2014Q3) | % Change |
|----------------------|--------|--------|--------|--------|--------|--------|--------|--------|--------|--------|--------|--------|--------|--------|-------------------------------|---|----------|
| ALABAMA | 27.0% | 27.4% | 27.3% | 27.5% | 26.5% | 26.0% | 24.0% | 22.9% | 22.2% | 22.3% | 22.2% | 22.1% | 22.39 | 21.97 | 44 | -5.35 | -19.6% |
| ALASKA | 15.6% | 15.1% | 13.7% | 13.4% | 13.0% | 13.6% | 12.4% | 12.5% | 11.8% | 15.0% | 12.8% | 12.7% | 14.79 | 15.88 | 13 | 2.14 | 15.6% |
| ARIZONA | 22.4% | 22.5% | 22.7% | 22.7% | 21.7% | 21.6% | 20.9% | 20.4% | 20.2% | 19.9% | 20.7% | 18.5% | 17.51 | 18.38 | 24 | -4.37 | -19.2% |
| ARKANSAS | 25.7% | 27.0% | 26.1% | 26.1% | 25.3% | 25.8% | 25.5% | 25.1% | 24.4% | 23.8% | 22.8% | 21.7% | 19.91 | 18.78 | 28 | -7.34 | -28.1% |
| CALIFORNIA | 21.7% | 21.6% | 21.6% | 21.3% | 20.4% | 20.1% | 19.2% | 19.0% | 18.4% | 17.7% | 17.1% | 16.3% | 15.85 | 15.52 | 12 | -6.04 | -28.0% |
| COLORADO | 19.8% | 19.7% | 19.9% | 19.9% | 20.3% | 19.6% | 19.4% | 18.5% | 17.5% | 17.0% | 16.4% | 16.4% | 16.12 | 16.03 | 14 | -3.87 | -19.4% |
| CONNECTICUT | 25.8% | 26.1% | 26.0% | 25.8% | 25.0% | 24.3% | 23.2% | 22.4% | 21.6% | 22.0% | 21.0% | 20.4% | 20.33 | 20.13 | 36 | -5.91 | -22.7% |
| DELAWARE | 21.1% | 21.0% | 21.3% | 21.8% | 22.6% | 21.9% | 20.9% | 18.0% | 16.8% | 16.8% | 15.5% | 15.5% | 14.69 | 14.83 | 6 | -6.47 | -30.4% |
| DISTRICT OF COLUMBIA | 21.4% | 20.0% | 20.0% | 19.4% | 18.8% | 19.4% | 18.2% | 17.4% | 17.6% | 15.9% | 14.5% | 14.8% | 15.04 | 14.72 | 5 | -5.26 | -26.3% |
| FLORIDA | 24.2% | 24.3% | 24.5% | 24.6% | 23.8% | 23.5% | 23.3% | 22.7% | 22.1% | 21.8% | 21.2% | 21.2% | 20.63 | 20.60 | 38 | -3.88 | -15.9% |
| GEORGIA | 28.4% | 28.4% | 28.7% | 28.7% | 28.0% | 27.1% | 24.2% | 22.7% | 21.8% | 21.4% | 21.1% | 20.6% | 20.33 | 20.11 | 35 | -8.55 | -29.8% |
| HAWAII | 11.4% | 12.2% | 12.5% | 13.5% | 15.3% | 13.2% | 11.7% | 11.0% | 11.4% | 12.1% | 11.6% | 8.5% | 9.07 | 8.70 | 1 | -3.75 | -30.1% |
| IDAHO | 26.4% | 25.7% | 25.3% | 26.4% | 25.1% | 24.5% | 23.9% | 23.1% | 21.9% | 20.7% | 19.3% | 19.3% | 18.85 | 18.40 | 25 | -6.94 | -27.4% |
| ILLINOIS | 26.0% | 25.8% | 25.7% | 25.6% | 25.3% | 25.7% | 25.5% | 25.0% | 25.2% | 24.8% | 24.0% | 24.1% | 23.74 | 23.54 | 49 | -2.16 | -8.4% |
| INDIANA | 23.0% | 23.6% | 24.0% | 24.1% | 22.9% | 23.1% | 22.2% | 21.7% | 20.9% | 21.0% | 20.2% | 19.9% | 19.24 | 19.02 | 30 | -5.01 | -20.8% |
| IOWA | 22.2% | 22.3% | 22.3% | 22.0% | 21.7% | 21.1% | 20.6% | 20.2% | 20.2% | 19.9% | 20.0% | 19.7% | 19.31 | 19.19 | 33 | -3.15 | -14.1% |
| KANSAS | 26.1% | 26.5% | 26.1% | 26.1% | 25.2% | 25.3% | 25.1% | 24.2% | 23.9% | 23.5% | 23.0% | 23.1% | 22.83 | 23.15 | 48 | -2.96 | -11.3% |
| KENTUCKY | 25.5% | 25.2% | 26.0% | 26.0% | 25.2% | 24.4% | 23.1% | 21.9% | 22.0% | 21.8% | 21.6% | 21.2% | 20.90 | 21.15 | 41 | -4.83 | -18.6% |
| LOUISIANA | 29.7% | 29.9% | 29.7% | 29.7% | 29.1% | 28.9% | 28.6% | 27.8% | 27.0% | 26.6% | 26.5% | 25.5% | 25.15 | 25.03 | 51 | -4.69 | -15.8% |
| MAINE | 26.4% | 26.7% | 27.2% | 26.9% | 25.9% | 25.1% | 24.2% | 22.6% | 21.7% | 21.3% | 20.1% | 18.5% | 18.16 | 19.11 | 31 | -8.14 | -29.9% |
| MARYLAND | 19.5% | 19.8% | 19.8% | 19.6% | 18.5% | 17.8% | 17.7% | 17.3% | 16.7% | 15.6% | 15.9% | 15.9% | 15.80 | 15.38 | 10 | -4.41 | -22.3% |
| MASSACHUSETTS | 26.6% | 26.7% | 26.7% | 26.6% | 25.4% | 25.1% | 24.5% | 22.9% | 22.2% | 21.8% | 21.2% | 20.6% | 20.18 | 20.13 | 37 | -6.59 | -24.7% |
| MICHIGAN | 16.2% | 16.0% | 16.4% | 16.4% | 15.8% | 16.0% | 15.5% | 14.9% | 14.4% | 14.1% | 13.9% | 13.7% | 13.35 | 13.33 | 2 | -3.06 | -18.7% |
| MINNESOTA | 18.9% | 19.0% | 19.0% | 18.8% | 18.1% | 18.0% | 18.0% | 17.9% | 17.3% | 16.7% | 16.6% | 16.0% | 15.33 | 15.14 | 8 | -3.89 | -20.4% |
| MISSISSIPPI | 26.6% | 26.8% | 26.6% | 26.3% | 26.6% | 26.1% | 25.3% | 24.7% | 24.4% | 25.3% | 24.3% | 23.8% | 23.00 | 23.04 | 47 | -3.53 | -13.3% |
| MISSOURI | 25.5% | 26.0% | 26.1% | 26.0% | 25.3% | 25.2% | 24.9% | 24.6% | 24.4% | 23.7% | 23.1% | 22.2% | 21.62 | 20.78 | 40 | -5.36 | -20.5% |
| MONTANA | 21.6% | 22.0% | 21.5% | 21.5% | 19.5% | 19.7% | 19.5% | 19.7% | 19.2% | 18.1% | 17.2% | 16.9% | 16.29 | 16.95 | 17 | -4.53 | -21.1% |
| NEBRASKA | 22.7% | 22.4% | 22.3% | 22.9% | 22.6% | 22.6% | 22.9% | 22.5% | 22.2% | 22.8% | 22.7% | 22.0% | 21.36 | 21.68 | 42 | -0.64 | -2.9% |
| NEVADA | 22.2% | 20.7% | 20.3% | 20.5% | 21.1% | 19.7% | 20.2% | 20.1% | 20.4% | 19.9% | 19.7% | 19.1% | 18.77 | 19.31 | 34 | -0.96 | -4.7% |
| NEW HAMPSHIRE | 25.7% | 25.4% | 25.5% | 25.1% | 24.0% | 23.8% | 23.7% | 22.7% | 21.1% | 21.2% | 20.1% | 18.8% | 18.37 | 18.61 | 27 | -6.92 | -27.1% |
| NEW JERSEY | 17.0% | 18.2% | 17.9% | 17.8% | 17.5% | 17.4% | 17.1% | 16.6% | 15.9% | 15.4% | 15.1% | 14.5% | 14.16 | 14.26 | 4 | -3.65 | -20.4% |
| NEW MEXICO | 22.4% | 22.3% | 21.7% | 22.0% | 20.0% | 20.4% | 22.2% | 20.3% | 20.7% | 17.7% | 18.1% | 19.5% | 17.29 | 16.86 | 16 | -4.81 | -22.2% |
| NEW YORK | 22.0% | 21.6% | 21.3% | 21.4% | 20.8% | 20.6% | 19.7% | 19.5% | 18.9% | 18.7% | 18.2% | 18.0% | 17.64 | 17.42 | 20 | -3.89 | -18.3% |
| NORTH CAROLINA | 21.1% | 20.8% | 21.4% | 21.3% | 20.7% | 19.9% | 18.0% | 16.5% | 16.0% | 15.8% | 15.6% | 15.0% | 14.84 | 15.40 | 11 | -6.05 | -28.2% |
| NORTH DAKOTA | 20.8% | 21.4% | 21.3% | 21.2% | 20.6% | 20.4% | 19.8% | 19.1% | 18.5% | 18.3% | 18.7% | 18.0% | 18.26 | 19.01 | 29 | -2.30 | -10.8% |
| OHIO | 24.9% | 25.0% | 25.4% | 25.4% | 25.0% | 24.8% | 24.5% | 24.1% | 23.3% | 22.7% | 22.0% | 21.6% | 21.59 | 21.78 | 43 | -3.66 | -14.4% |
| OKLAHOMA | 26.7% | 26.8% | 27.3% | 27.5% | 27.3% | 26.6% | 25.5% | 23.0% | 22.7% | 22.3% | 21.7% | 21.5% | 20.95 | 20.70 | 39 | -6.63 | -24.3% |
| OREGON | 20.6% | 21.0% | 21.5% | 21.3% | 20.0% | 19.9% | 19.2% | 19.1% | 18.6% | 18.8% | 18.3% | 18.4% | 17.08 | 17.81 | 22 | -3.67 | -17.1% |
| PENNSYLVANIA | 21.6% | 22.1% | 22.3% | 22.2% | 21.7% | 21.1% | 21.1% | 20.5% | 19.4% | 19.2% | 18.8% | 18.3% | 17.92 | 17.64 | 21 | -4.66 | -20.9% |
| RHODE ISLAND | 23.0% | 23.8% | 24.0% | 23.9% | 23.1% | 21.7% | 20.2% | 20.3% | 19.3% | 18.4% | 17.5% | 16.9% | 16.54 | 16.99 | 19 | -7.00 | -29.2% |
| SOUTH CAROLINA | 20.6% | 20.5% | 20.7% | 20.6% | 20.7% | 20.2% | 18.3% | 17.2% | 16.9% | 15.9% | 15.5% | 15.3% | 15.64 | 15.25 | 9 | -5.45 | -26.3% |
| SOUTH DAKOTA | 21.8% | 21.8% | 21.5% | 21.5% | 21.3% | 21.4% | 20.5% | 20.0% | 18.8% | 18.1% | 18.6% | 18.0% | 18.06 | 18.17 | 23 | -3.36 | -15.6% |
| TENNESSEE | 29.3% | 29.5% | 30.0% | 29.3% | 29.0% | 27.7% | 27.2% | 25.0% | 23.9% | 24.0% | 23.4% | 23.1% | 22.72 | 22.54 | 45 | -7.42 | -24.8% |

Partnership to Improve Dementia Care in Nursing Homes
Antipsychotic Drug use in Nursing Homes Trend Update
Quarterly Prevalence of Antipsychotic Use for Long-Stay Residents, States 2011Q2 to 2014Q3

| State | 2011Q2 | 2011Q3 | 2011Q4 | 2012Q1 | 2012Q2 | 2012Q3 | 2012Q4 | 2013Q1 | 2013Q2 | 2013Q3 | 2013Q4 | 2014Q1 | 2014Q2 | 2014Q3 | Rank in 2014Q3 (lower=better) | Percentage point difference (2011Q4-2014Q3) | % Change |
|---------------|--------|--------|--------|--------|--------|--------|--------|--------|--------|--------|--------|--------|--------|--------|-------------------------------|---|----------|
| TEXAS | 28.4% | 28.5% | 28.8% | 28.9% | 28.2% | 28.3% | 28.0% | 27.9% | 27.3% | 27.0% | 26.5% | 25.7% | 25.28 | 24.56 | 50 | -4.29 | -14.9% |
| UTAH | 26.9% | 24.7% | 27.1% | 26.9% | 27.1% | 26.3% | 26.4% | 25.0% | 24.5% | 23.6% | 21.7% | 21.7% | 23.13 | 22.83 | 46 | -4.28 | -15.8% |
| VERMONT | 25.5% | 26.1% | 25.4% | 25.7% | 26.2% | 24.9% | 23.4% | 20.3% | 20.2% | 20.2% | 18.8% | 18.2% | 18.00 | 19.18 | 32 | -6.22 | -24.5% |
| VIRGINIA | 22.4% | 22.8% | 23.0% | 22.9% | 21.8% | 21.9% | 22.1% | 22.1% | 21.0% | 20.5% | 19.7% | 19.0% | 18.21 | 18.51 | 26 | -4.53 | -19.7% |
| WASHINGTON | 22.8% | 23.0% | 22.3% | 21.8% | 21.7% | 21.6% | 20.6% | 20.2% | 19.7% | 19.1% | 18.6% | 17.8% | 17.45 | 16.99 | 18 | -5.34 | -23.9% |
| WEST VIRGINIA | 20.1% | 20.3% | 20.5% | 21.5% | 20.4% | 20.7% | 20.4% | 19.8% | 19.0% | 18.0% | 16.5% | 16.1% | 16.55 | 16.20 | 15 | -4.29 | -20.9% |
| WISCONSIN | 18.7% | 18.7% | 19.0% | 18.9% | 18.9% | 19.0% | 18.0% | 17.7% | 17.4% | 16.8% | 16.3% | 15.4% | 14.58 | 14.23 | 3 | -4.82 | -25.3% |
| WYOMING | 17.8% | 18.4% | 16.8% | 16.9% | 19.4% | 16.8% | 17.5% | 17.0% | 16.5% | 17.2% | 17.9% | 16.5% | 15.56 | 15.09 | 7 | -1.73 | -10.3% |